



DLP-1 Appliance

Data loss prevention,
enforcement and
end user remediation

Security Gateways

DLP-1 Appliance—Model 9571

OVERVIEW

Check Point DLP-1™ solves the longstanding problem with data loss prevention technology—enabling organizations to effectively protect sensitive company and customer data, without placing an additional burden on your scarce IT resources. Check Point DLP combines state-of-the-art prevention and enforcement with end user remediation capabilities, for the ideal blend of security and usability.

UserCheck™, Check Point's unique end user remediation function, educates users on self-incident handling and corporate data policies, while empowering them to remediate events in real-time. Files that are sent or uploaded to the web are processed by Check Point MultiSpect™, a multi-data classification engine that inspects traffic flow for all data-in-motion, and provides high accuracy in correlating users, data types, and processes.

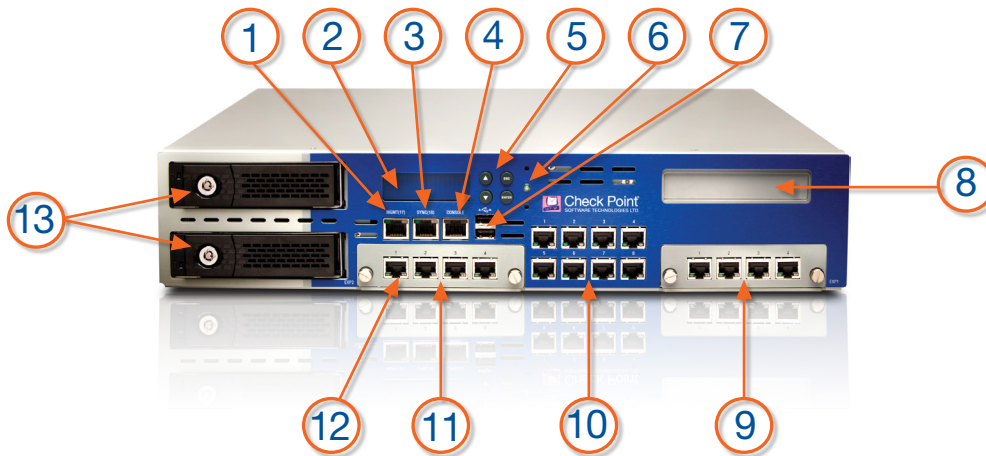
BASE CONFIGURATION

- Management for 2 Gateways
- 8 1GbE ports
- 1 Sync port, 1 Management port
- Available storage 2 x 1TB
- Redundant dual hot-swappable hard disk drives and power supplies
- Lights out Management module (optional)
- 4-port modular bypass card (optional)

BENEFITS

- Easily defines data policies while assuring consistent enforcement across the entire network
- Prevents data loss by inspecting traffic in real-time, and proactively blocking the transmission of sensitive information
- Includes more than 250 pre-defined best-practices policies and rules for easy administration
- High performance appliance supports 5,000 users at up to 2.5 Gbps throughput
- Centralized Check Point management for unprecedented visibility and control
- Open scripting language to create customized data types for easily extensible and granular prevention





1. Management connection port - Ethernet connection to a remote management workstation
2. LCD display screen
3. Sync port
4. Console port - for a serial connection to the appliance using a terminal emulation program such as HyperTerminal
5. Keypad for the LCD display
6. Power indicator LED
7. USB ports
8. Slot for optional Lights Out Management (LOM) module (http://supportcontent.checkpoint.com/documentation_download?ID=10876)
9. Expansion line card (2 or 4 ports)
10. Built in Ethernet ports (Lan1 - Lan8)
11. Optional bypass card
12. Optional bypass Indicators - one LED for the inline pair of ports Exp2-1/Exp2-2, and another LED for inline pair of ports Exp2-3/Exp2-4. When the light is... <ul style="list-style-type: none"> • Red: The ports are operating in bypass mode, such as when the appliance is turned off • Green: The ports are in normal mode • Off: The port is not connected
13. Hard disk drives

TECHNICAL SPECIFICATIONS

LAN Support

- 10 Copper 1 GbE

Hard Disk Configuration

- 2 x 1TB (Mirrored – RAID 1)

Performance

- Recommended Users: 5,000
- Messages Per Hour: 350,000
- Throughput: 2.5 Gbps

Dimensions

- Enclosure: 2U
- Standard: 17 x 20 x 3.46 in.
- Metric: 431 x 509.5 x 88mm
- Weight: 16.5kg (36.3 lbs)

Power Requirements

- AC Input Voltage: 100-240V
- Frequency: 50/60Hz
- Power Supply Maximum: 400W
- Power Consumption Maximum: 200.7W

Environment Operating Conditions

- Temperature: 41°-104°F / 5°-40°C
- Altitude: 8,202ft, 2,500 m
- Humidity: 10%-85% (non-condensing)

Compliance

UL 60950; FCC Part 15, Subpart B, Class A;
EN 55024; EN 55022; VCCI V-3AS/NZS 3548:1995;
CNS 13438 Class A (test passed; country approval pending);
KN22KN61000-4 Series, TTA; IC-950; ROHS

