



## Power-1 Appliances

Security for high-performance environments

# Security Gateways

## Power-1 Appliance—Model 11077

### OVERVIEW

The Power-1™ 11077 enables organizations to maximize security in high-performance environments such as large campuses or data centers. It combines integrated firewall, IPsec VPN, and intrusion prevention with advanced acceleration and networking technologies, delivering a high-performance, scalable security platform for multi-Gbps environments.

The Power-1 11077 is based on Check Point Software Blade Architecture for flexible and easy deployment of additional security capabilities like Application Control, Identity Awareness, VoIP protections and UTM functionality, for guaranteed low total cost of ownership.

### POWER-1 11000 'FIELD UPGRADEABLE' SYSTEM ARCHITECTURE

Check Point's innovative Power-1 11000 delivers the industry's first 'field upgradeable' system architecture. Its unique ability to expand its system capacity with simple software license upgrades has been widely welcome as a way to future-proof security infrastructures.

With a few key strokes the customers can easily add up to 100% additional capacity to their existing Power-1 11000 systems without any network downtime.

Customers can purchase the Power-1 11067 (system capacity of 15 Gbps) and upgrade to Power-1 11077 or 11087 'on-demand' whenever the need arises.

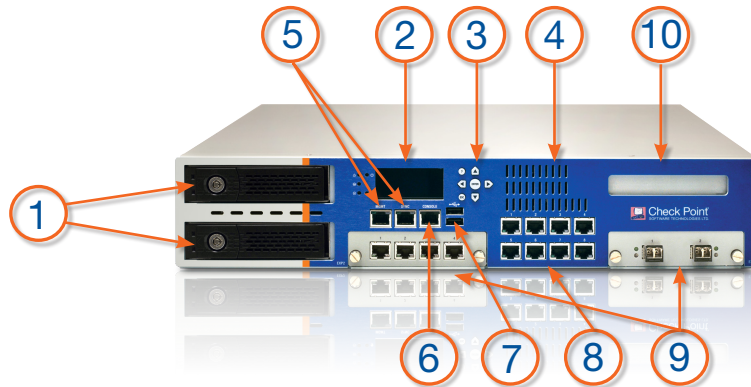
### BASE CONFIGURATION

- 14 ports of 10/100/1000Base-T
- Dedicated Management & Sync ports
- RJ45 Console port
- Dual hot swappable AC power supplies for redundancy
- Dual front-facing hot-swappable HDDs with RAID 1
- Storage – Hard Drive 2 x 250GB
- Two front-facing copper/fiber (1GbE/10GbE) expansion slots
- Seven Software Blades included for high performance and unrivaled security: Firewall, IPSec VPN, Application Control, Identity Awareness, Advanced Networking, Acceleration & Clustering and IPS

### BENEFITS

- Streamlines deployment of enterprise security for large offices and data centers
- Ensures availability of business-critical applications with up to 20 Gbps firewall throughput and up to 12 Gbps intrusion prevention throughput
- Provides comprehensive security Software Blades including Firewall, IPS, IPsec VPN, Advanced Networking, Acceleration & Clustering, Application Control and Identity Awareness
- Protects against emerging threats with optional Software Blades such as VoIP, Web Security, Antivirus, URL Filtering and more
- Simplifies administration with a single management console for all sites





1. Redundant Hot-Swappable Hard Drives	6. Console Port
2. LCD Display	7. USB Ports
3. LCD Control Buttons	8. 8 x 1GbE Ports
4. Air Intake	9. Field Swappable Expansion Modules (Basic configuration includes 4 1GbE Ports Module) <ul style="list-style-type: none"> <li>• 1 Gbe Copper (4 Ports)</li> <li>• 1 GbE SX Fiber (Multi Mode) (4 Ports)</li> <li>• 1 GbE LX Fiber (Single Multi Mode) (4 Ports)</li> <li>• 10 GbE SR Fiber (Multi Mode) (2 Ports)</li> <li>• 10 GbE LR Fiber (Single Mode) (2 Ports)</li> </ul>
5. Management & Sync Ports	10. Lights-Out Management Module (Optional Out-Of-Band Management)

## TECHNICAL SPECIFICATIONS

### LAN Support

- 1000Base-T (10/100/1000 Mbps Ethernet) – Copper
- 1000Base-SX (1000 Mbps Ethernet) – SFP
- 1000Base-LX (1000 Mbps Ethernet) – SFP
- 10 GBase-SR 300 meters (10 Gbps Ethernet) – Multi Mode
- 10 GBase-LR 10 km (10 Gbps Ethernet) – Single Mode

### Hard Disk Configuration

- 2 X 250 GB HDD

### Performance

- Firewall – 20 Gbps
- VPN – 4 Gbps
- IPS – 12 Gbps
- Concurrent Sessions – 1.2 Million

Note: Performance data represents the maximum capabilities of the systems as measured under optimal testing conditions.

### Dimensions

- Standard: 17 x 22.8 x 3.46 in.
- Metric: 431 x 580 x 88mm
- Weight: 23.4kg (51.6 lbs)

### Power Requirements

- AC Input Voltage: 100-240V
- Frequency: 50/60Hz
- Power Supply Maximum: 500W
- Power Consumption Maximum: 253.2W

### Environment Operating Conditions

- Temperature: 41°-104°F/5°-40°C
- Altitude: 8196ft, 2,500 m
- Humidity: 10%-85% (Non-Condensing)

### Compliance

UL 60950; FCC Part 15, Subpart B, Class A; EN 55024;  
EN 55022; VCCI V-3AS/NZS 3548:1995; CNS 13438  
Class A (test passed; country approval pending);  
KN22KN61000-4 Series, TTA; IC-950; ROHS

## CONTACT CHECK POINT

### Worldwide Headquarters

5 Ha'Solelim Street, Tel Aviv 67897, Israel | Tel: 972-3-753-4555 | Fax: 972-3-624-1100 | Email: info@checkpoint.com

### U.S. Headquarters

800 Bridge Parkway, Redwood City, CA 94065 | Tel: 800-429-4391; 650-628-2000 | Fax: 650-654-4233 | www.checkpoint.com